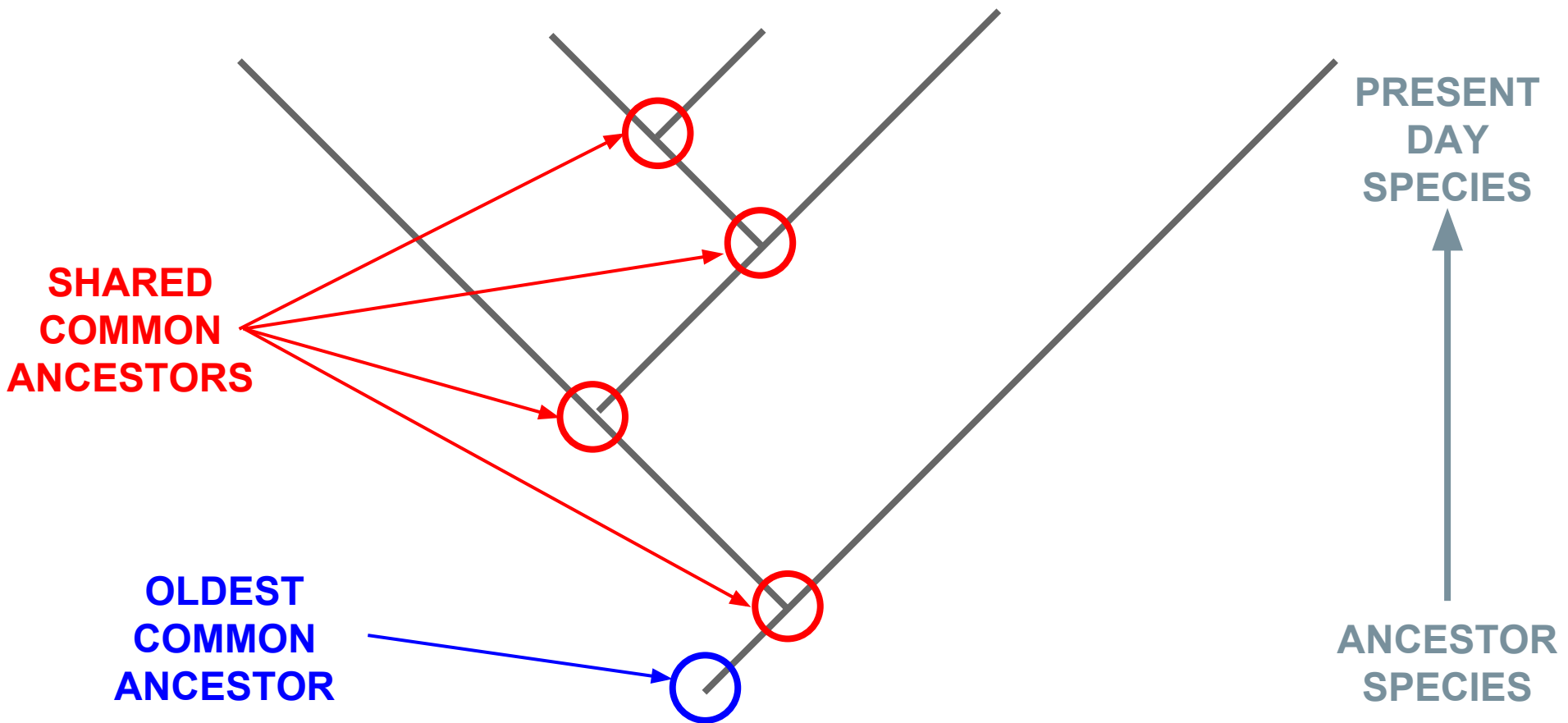


# PHYLOGENETIC TREES



SO HOW WOULD WE ARRANGE THE BEARS THAT WE READ ABOUT EARLIER ON A PHYLOGENETIC TREE?

## Remember!

- More similar species will share a more recent common ancestor.
- Less similar species will have diverged much earlier (and therefore have a much more distant common ancestor with the other species).

